

054310

RECEIVED
LARAMIE COUNTY
CHEYENNE, WY.

'89 FEB 17 AM 10 26

CERTIFIED LAND CORNER RECORDATION

DESCRIPTION OF CORNER EVIDENCE FOUND, AND ORIGINAL RECORD (If known)

Found granite stone on its side.

1/4
S.19 S.20
T.17N., R.67W.
6th P.M.

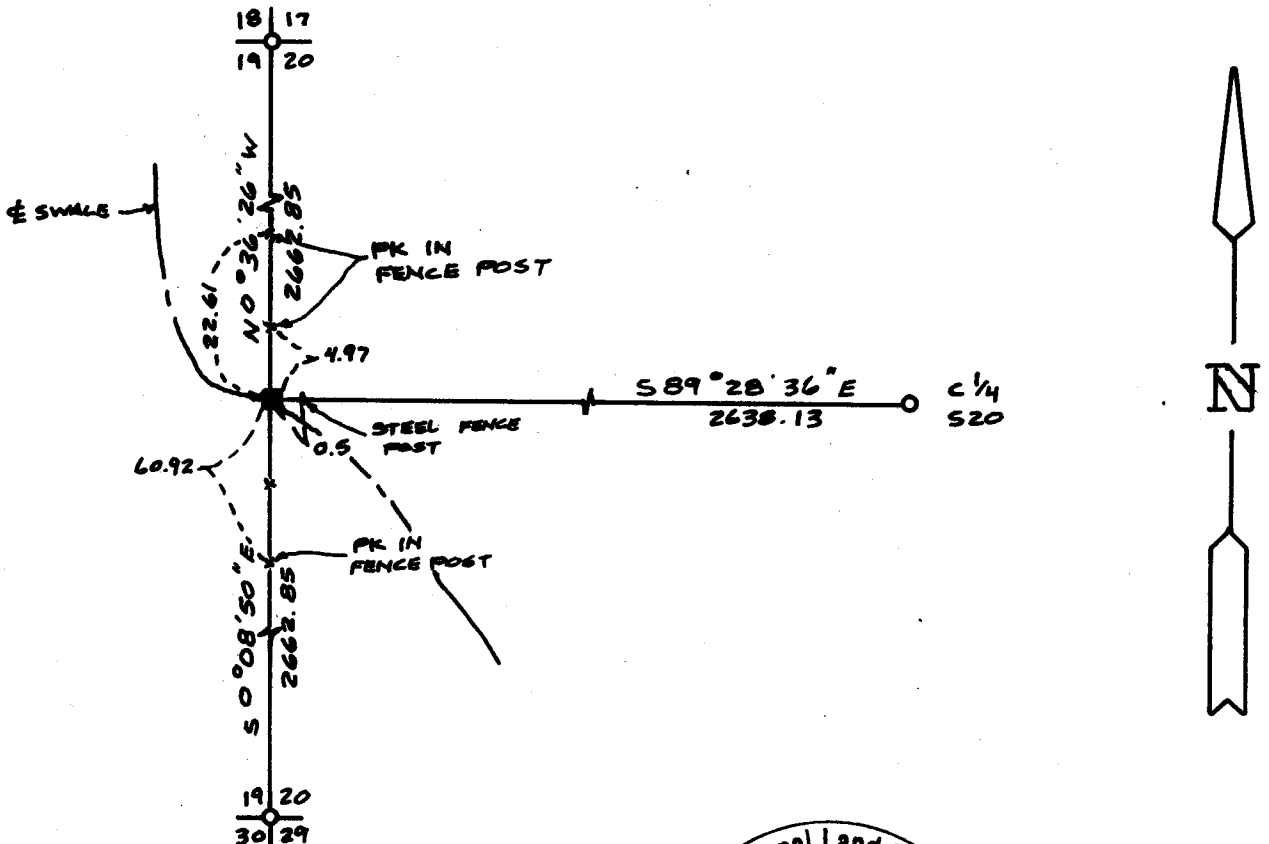
G.L.O. Record: Granite 16"x12"x8" set by Alfred M. Rogers, October 19, 1872

DESCRIPTION OF MONUMENT AND ACCESSORIES ESTABLISHED
TO PERPETUATE THE ORIGINAL LOCATION OF THIS CORNER:

At the corner: Reset found stone in upright position at proportionate distance North-South and fence line for East-West.

Accessories: See ties below.

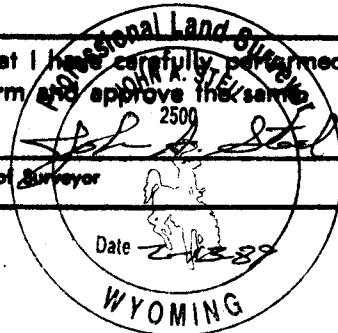
SKETCH, WITH COURSE AND DISTANCE TO ADJACENT CORNER IF DETERMINED IN THIS SURVEY.
(May Sketch or Paste Reproduction on Reverse Side.)



I, John A. Steil certify that I have carefully performed or reviewed the work done on the diagrammed corner as reported on this recordation form and approve the same.

Signature of Surveyor

L.S. 2500
Registration No.



STATE OF WYOMING,
Office of Clerk and Recorder,
County of _____

This "corner record" was filed for record on the _____ day of _____, 19____, was noted on the cross-index plat and is assigned page No. _____, in book No. _____.

John C. Henderson

Cross Index No.	P-5	T.	17N	R.	67W	Mer.	6th
		T.		R.		Mer.	
		T.		R.		Mer.	
		T.		R.		Mer.	
		T.		R.		Mer.	
		T.		R.		Mer.	
		T.		R.		Mer.	